



Activity Sheet – for use in conjunction with

## THE BEACH BOOK

*From Rock Pools to Dune Bush*

By Jerry Gosnell

### Level 2 – Sheet 1



Name \_\_\_\_\_

Date \_\_\_\_\_

Look for this seaweed in low tidal pools or washed up on the beach at high tide.

It is quite stiff and has many branches. The cylindrical segments are separated by obvious black joints.

Did you find it on the beach/rock pool?      yes / no

If you answered yes above go on to the following questions.

Was it in a pool or washed up? \_\_\_\_\_

What colour is it? \_\_\_\_\_

Did you find it in the book?      Yes / no

If you answered yes above go on to the following questions

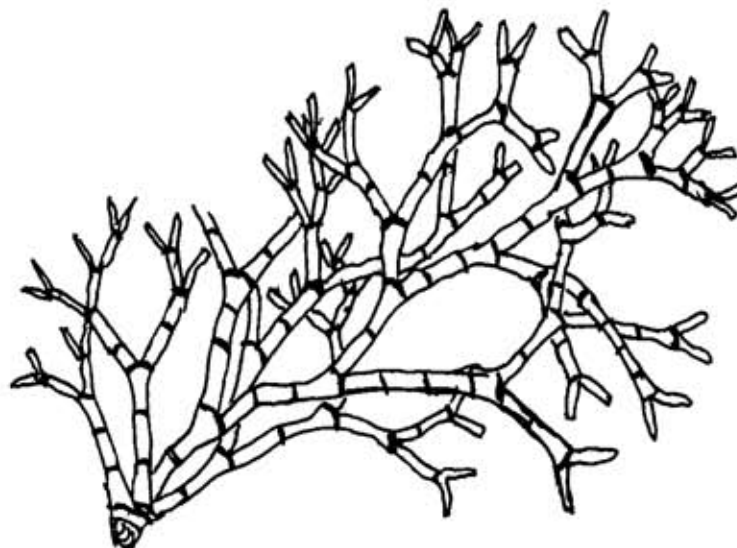
What page is it shown on? \_\_\_\_\_

What makes it stiff? \_\_\_\_\_

What family does it belong to and what is its name?

\_\_\_\_\_

Finish the drawing below and colour it correctly.





# Activity Sheet – for use in conjunction with **THE BEACH BOOK**

*From Rock Pools to Dune Bush*

By Jerry Gosnell

**Level 2 Sheet 2**

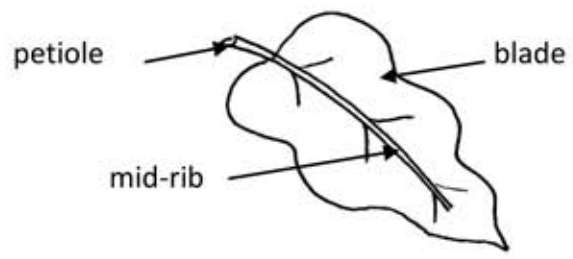


Name \_\_\_\_\_

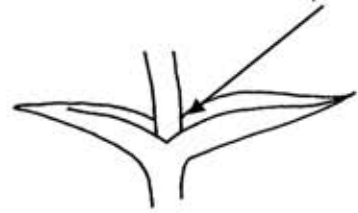
Date \_\_\_\_\_

When you find a plant there are several parts to look at in order to identify it. This activity looks at the leaves on the dune plants. Leaves can be **simple** or **compound**.

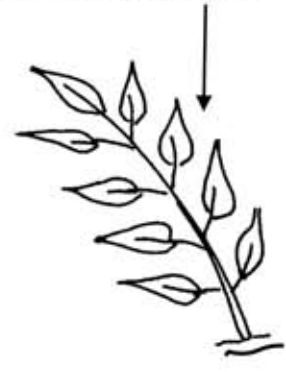
**Simple** leaves have a single undivided blade. If the edges have serrations, indents or lobes these do not reach the midrib. They may have a small stalk (the petiole) or be unstalked (sessile).



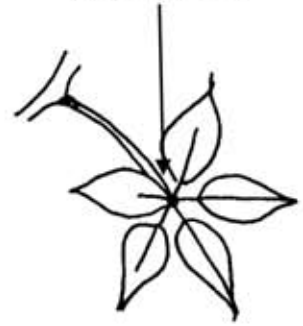
these sessile leaves have no petiole



**Compound** leaves have the blade divided into leaflets which may even look like small leaves! They can be **pinnate**;



or **palmate**.



Some compound leaves are trifoliolate – how many leaflets do you think they have? (Hint! Think of a **tricycle**, a **triangle** or a **triathlon**) \_\_\_\_\_

Can you find an example of each of the above kinds of leaves? Maybe you can name the plants you found them on.



Activity Sheet – for use in conjunction with

## **THE BEACH BOOK**

*From Rock Pools to Dune Bush*

By Jerry Gosnell

**Level 2 – Sheet 3**



Name \_\_\_\_\_

Date \_\_\_\_\_

### **Rockpool Cricket**

This is a game for teams of eleven players (well it is cricket isn't it?) but can even be played by any number in the teams, even between two individuals! You also need a beach, somewhere to write (you can use the back of this sheet), a copy of *The Beach Book*, a referee and a scorer who may also be the referee.

The object of game is to collect as many species of seaweed as you can in 10 minutes off the beach (**NOTE that any seaweed picked off the rocks or from rock pools gives a golden duck**). Each species (not each seaweed) scores a run.

Now you have another 20 minutes to try to identify your collection from the book. Each correct identification scores a **four**. If you can identify it correctly without using a book you score a **SIX**. An incorrect identification loses a wicket.

**Enjoy the game!**

**Scorecards for Rockpool Cricket can be downloaded separately**

(with thanks to Kieran Hamley)





Activity Sheet – for use in conjunction with

# THE BEACH BOOK

*From Rock Pools to Dune Bush*

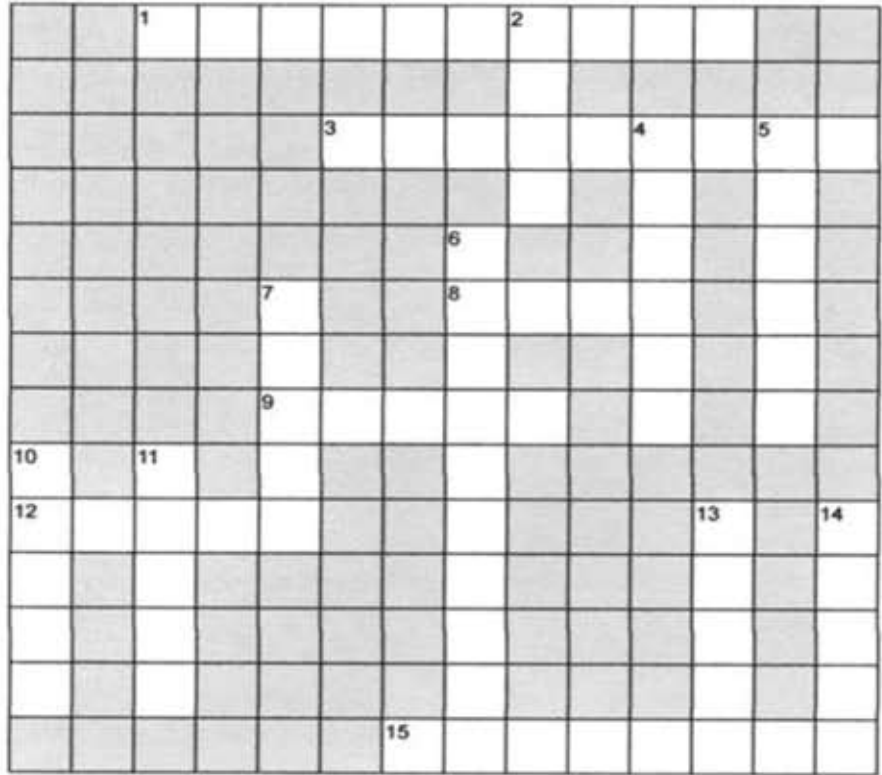
By Jerry Gosnell

## Level 2 – Sheet 4



Name \_\_\_\_\_

Date \_\_\_\_\_



EclipseCrossword.com

### Across

- 1. This plant has big thorns, white flowers and edible red fruit
- 3. Juice from the fleshy leaves of these plants helps stings
- 8. Are mature milkwoods tall or low growing?
- 9. Sand hills on the beach are called this
- 12. These plants are tall with prickly leaves
- 15. These fish come in great shoals in cold water

- 6. These tall trees are sometimes called Wild Bananas
- 7. Most days we have two high and two low .....
- 10. Dune Morning Glory has flowers this colour
- 11. Seaweeds grow on these
- 13. Seaweeds can be classified as green, ....., or red
- 14. These land plants have spores not seeds

### Down

- 2. Beach pumpkin has leaves this colour
- 4. Gazanias have flowers this colour
- 5. The name of our ocean

# THE BEACH BOOK

*From Rock Pools to Dune Bush*

By Jerry Gosnell

**Level 2 Sheet 5**

## Checklist: Plants I have found



Name \_\_\_\_\_

Date \_\_\_\_\_

Date	I found flowers/fruit
Common Name	
Scientific Name	
I found it at (name of place)	
The habitat was rocks/rock pool/ sand/grassy/bushes and trees	

Date	I found flowers/fruit
Common Name	
Scientific Name	
I found it at (name of place)	
The habitat was rocks/rock pool/ sand/grassy/bushes and trees	

Date	
Common Name	
Scientific Name	
I found it at (name of place)	
The habitat was rocks/rock pool/ sand/grassy/bushes and trees	

Date	I found flowers/fruit
Common Name	
Scientific Name	
I found it at (name of place)	
The habitat was rocks/rock pool/ sand/grassy/bushes and trees	